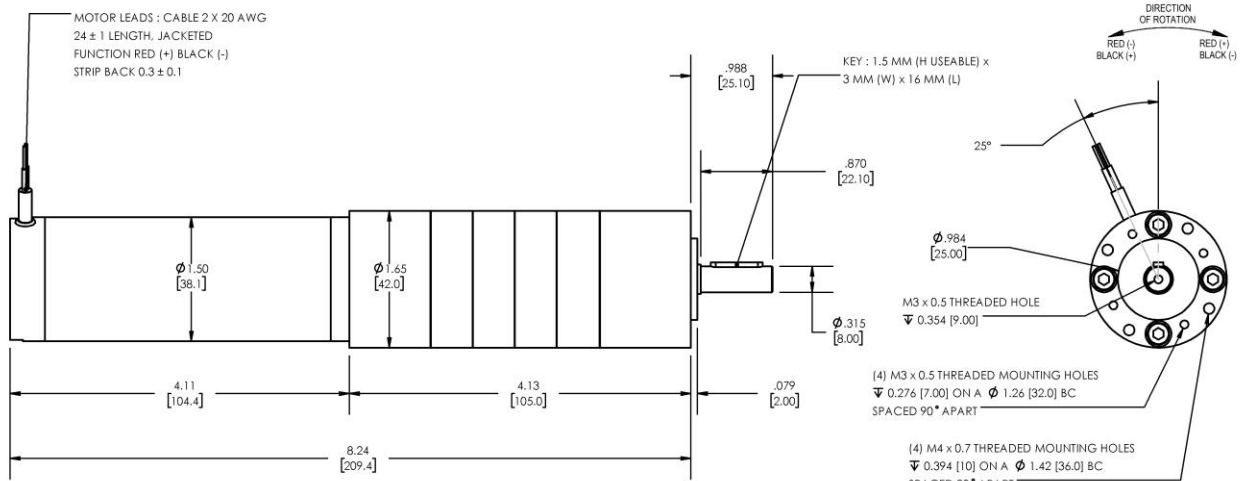




Model Number:
MMP S17-400C-12V GP42-777



DIMENSIONS ARE INCHES [MM] UNLESS OTHERWISE STATED

PLANETARY GEARMOTOR OUTPUT PARAMETERS:	VALUE	UNITS	TOLERANCE
Gearhead Ratio (exact)	776.76 : 1		
Gearmotor Output Speed (at Cont. Torque)	3.9	RPM	+/- 15%
Gearmotor Rated Continuous Torque	266	In-Lbs	MAX
Gearmotor Peak Torque Capacity	266++	In-Lbs	MAX
Gearhead Standard Backlash	63	Arc Minutes	MAX
Gearhead Efficiency	65%	----	----
Output Shaft Radial Load Capacity	68	Lbs	MAX
Output Shaft Axial Load Capacity	25	Lbs	MAX
Gearmotor Total Weight	3.0	Lbs	MAX

++ All Peak Torque values are dependent upon duty. Contact our sales office for details.

DC MOTOR PERFORMANCE PARAMETERS:	VALUE	UNITS	TOLERANCE
Input DC Voltage	12	DC VOLTS	----
No-Load Current	0.54	AMPERES	MAX
No-Load Speed	3257	RPM	+/- 15%
Rated Continuous Torque	8.4	OZ-IN	MAX
Rated Continuous Current	2.3	AMPERES	MAX
Rated Speed (at Cont. Torque)	3045	RPM	+/- 15%
Rated Continuous Power Out	19	WATTS	+/- 15%
Peak Motor Torque	8.4	OZ-IN	MAX
Peak Motor Current	2.3	AMPERES	MAX
Back EMF Constant (Ke)	3.6	V/KRPM	+/- 10%
Torque Constant (Kt)	4.8	OZ-IN/AMP	+/- 10%
DC Armature Resistance	0.63	OHMS	+/- 15%
Armature Inductance	0.17	mH	+/- 15%
Number of Motor Poles	4	(-)	----
Armature temperature	155	DEG. C	MAX

NOTES:

- Rated speeds may drop as the motor temperature increases. Values are stated with the motor at 25 °C.
- All Peak Torque values are dependent upon duty. Contact our sales office for details.

ENCODER & BRAKE OPTIONS AVAILABLE – [FOLLOW THIS LINK FOR DETAILS](#)

NEMA MOUNTING FLANGE OPTION AVAILABLE – [FOLLOW THIS LINK FOR DETAILS](#)

MIDWEST MOTION PRODUCTS, INC

DESIGN, MANUFACTURING & DISTRIBUTION - MOTION CONTROL EQUIPMENT

www.midwestmotion.com

email: sales@midwestmotion.com